

WILFLEY K PUMP IMPROVES PUMP WEAR LIFE

**BY 1300%**

**WILFLEY®**

DURABLE. WATERLESS SEALING. INDUSTRIAL PUMPS.



**The Customer:**  
**Ingenio Manuelita**

**Country:**  
**Colombia**

**Market:**  
**Sugar Mill**

**Application:**  
**Ash Scrubber**

**Product:**  
**Model K slurry 6"x4",  
Maxalloy 5A Material,  
Wilfley Waterless  
Seal technology**

## BACKGROUND

Manuelita is one of the biggest agro-industrial companies in Colombia, generating more than 5,000 or direct jobs. Manuelita mills sugar cane all year round and the regulating Environmental Agency in Colombia request Manuelita to have the scrubber its system functional all the time. The system can only be down 3 days max during a year.

## THE CHALLENGE

Manuelita was facing high maintenance cost and low reliability on its scrubber slurry pump system. A result of that they had one pump in operation, two backups and one pump in the repair shop. "It was horrible", that is how Manuelita's maintenance engineer remembers those times. Those pumps had a wear life of three months max.

Leaking was an additional challenge. Manuelita tried mechanical seals with poor results and later moved to packing which generated bearing and shaft issues.

## THE SOLUTION

The Wilfley team ran a system analysis and specified a Wilfley Slurry Model K, 6x4 with Maxally 5A wear resistant material. Manuelita also value the easy maintenance setup that only a side suction pump can offer.

## THE RESULT

**"The problem is over."** "We have a very positive experience with Wilfley", words from Manuelita maintenance engineer looking back. The pumps are lasting three years instead of two or three months. Also, the improvement of seal performance is very impressive.



## PUMP COMPARISON

	Incumbent Pump	Wilfley Model 4k
<b>Wear Life</b>	<b>12 weeks</b>	<b>156 weeks</b>
<b>Improvement</b>		<b>1300%</b>
<b>Total Cost of Ownership 3 Years</b>	<b>US\$46,500</b>	<b>0</b>

## WILFLEY MODEL K

### Key Features and Benefits

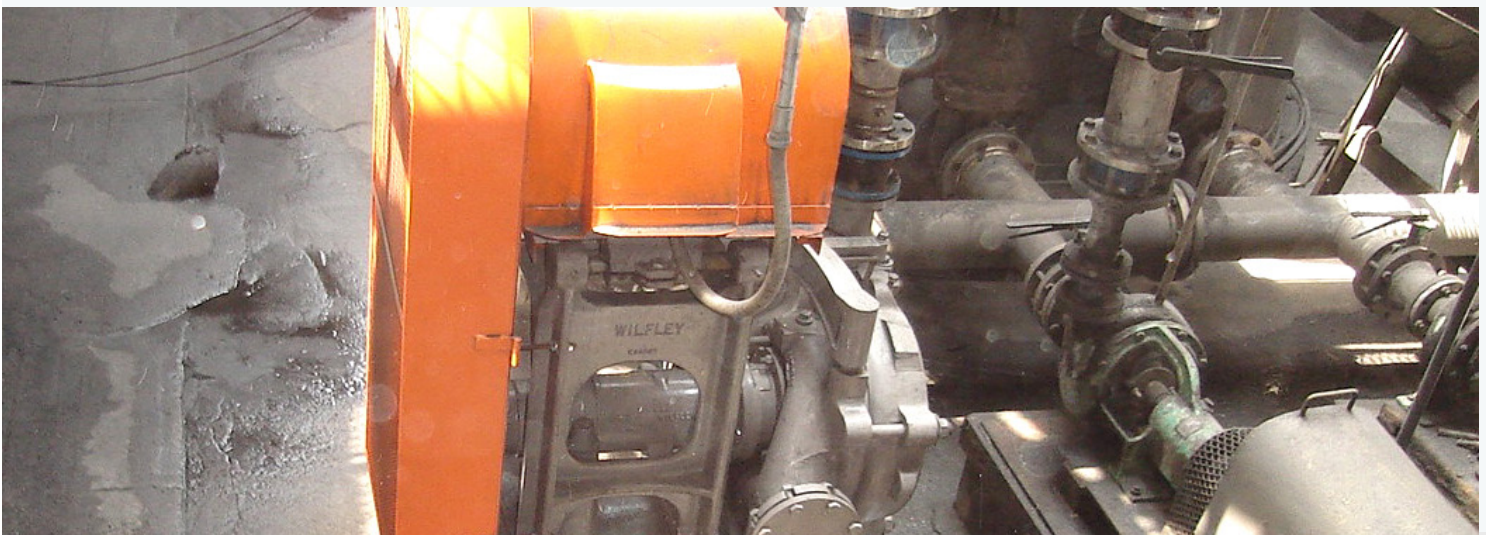
- ✓ A maintenance engineer's delight
- ✓ Case can be easily removed without disturbing suction or discharge piping
- ✓ Wear resistance materials
- ✓ Waterless sealing technology.



### Increase the plant sugar recovery and decrease your maintenance cost

Wilfley pumps and their Waterless Sealing System helps sugar cane mills to increase sugar recovery by eliminating dilution of the traditional water seal systems and eliminating seal leaks. The Wilfley Waterless Sealing Technology is reliable in adverse conditions like pumping contaminated, fibrous, and viscous solutions.

From juice extraction, juice clarification, juice evaporation, crystallization to the refinery, Wilfley offers a wide range of solution that includes process and slurry pumps, duplex stainless steel and high chrome materials.



**Tel: +1-303-779-1777**

**Email: [pumps@wilfley.com](mailto:pumps@wilfley.com)**

[www.wilfley.com](http://www.wilfley.com)

5870 E. 56th Avenue Commerce City, CO 80022 USA

# WILFLEY®

**DURABLE. WATERLESS SEALING. INDUSTRIAL PUMPS.**